

STORM TRYSAIL CLUB

Ted Hood Regatta



Marblehead 2017

HOST: THE BOSTON YACHT CLUB

August 25-27

SAILING INSTRUCTIONS

(As Amended)

The Organizing Authority (OA) is the Storm Trysail Club

**The Host Club is the Boston Yacht Club (official host);
in association with the Corinthian Yacht Club and the Eastern Yacht Club**

1 RULES

- 1.1 The regatta will be governed by the rules as defined in *The Racing Rules of Sailing* (RRS); the 2017 PHRF New England (PHRF-NE) policies, procedures and by laws; One-design class rules for one-design classes.
- 1.2 One-design boats shall comply with their class rules except the J105 Class will have a crew weight limit of 1200 lbs.
- 1.3 The US Sailing prescription to RRS 63.2 (relating to hearings on redress) will not apply.

2 NOTICES TO COMPETITORS

Notices to competitors will be posted on the official notice board located at the PC Donald R. Humphreys Yardarm, and as courtesy in the hallway near the trophy room of the Corinthian Yacht Club, and in the Sailing Center (on the ground floor) of the Eastern Yacht Club. Notices may also be posted on the unofficial notice board for the event on www.yachtscoring.com.

3 CHANGES TO SAILING INSTRUCTIONS

Any change to the sailing instructions will be posted before 0800 on the day it will take effect, except that any change to the schedule of races will be posted by 2000 on the day before it will take effect.

4 SIGNALS MADE ASHORE

- 4.1 Signals made ashore will be displayed from the flagpole yardarm at the Boston, Corinthian, and Eastern Yacht Clubs. Flag “AP” with two sound signals means “races have been postponed for all classes”; Flag “AP” over one or more Class Flags with two sound signals means “races have been postponed for the indicated Class(es)”.
- 4.2 When the AP flag is displayed ashore, ‘1 minute’ is replaced with ‘not less than 60 minutes’ in RRS Race Signals.

5 SCHEDULE

- 5.1 Thursday August 24, 2017 Registration from: 1700hrs to 1900hrs at the Boston Yacht Club. Skippers Meeting will be at 1900hrs.
- 5.2 Friday August 25, 2017 Registration From: 0730hrs to 0900hrs.
- 5.3 Racing is scheduled to take place on August 25th, 26th, and 27th.
- 5.4 The scheduled time of the first warning signal for each day will be 1100hrs, with the exception of the Doublehanded class on Friday, August 25th, where the scheduled time of the first warning signal will be 1730hrs, and the Pursuit Race on Sunday, August 27th, where the scheduled time of the first warning signal will be 1155hrs.
- 5.5 No warning signal may be made after 1430hrs Sunday August 27, 2017.
- 5.6 It is the intention of the Race Committee to sail as many races as practical.
- 5.7 Flag A displayed, with no sound, while boats are finishing, means “No more racing today.”

6 DIVISIONS, CLASS FLAGS, STARTING SIGNALS AND MARKS

- 6.1 Division splits, initial starting order, class streamer color, and description of marks will be defined in SI Addendum 1. It will be posted on the official notice board no later than 1600hrs EDT, Thursday, August 24, 2017 and copies will be available to all competitors at registration.
- 6.2 Warning flags for each one design class will be the class insignia for one design classes.
- 6.3 Warning/Class flags for PHRF classes will be as follows:

PHRF 1:	Warning: Numeral Pennant 1	Class 1
PHRF 2:	Warning: Numeral Pennant 2	Class 2
PHRF 3:	Warning: Numeral Pennant 3	Class 3
JAM:	Warning: Numeral Pennant 4	Class 4
Double-handed:	Warning: Numeral Pennant 5	Class 5
- 6.4 Any and all subsequent starting orders will be at the discretion of the race officer for each racing line.

7 RACING AREAS

The location of racing areas will be defined in Illustration A, Line Area Chart.

8 COURSES

- 8.1 Courses are shown in Illustration B, including the order in which marks are to be passed, and the side on which each mark is to be left.
- 8.2 The approximate compass bearing from the leeward mark to Mark 1, and the designated course will be displayed in the forward rack of the race committee signal boat. The distance from the leeward mark to Mark 1 will be displayed in the aft rack of the race committee signal boat.
- 8.3 Gates: If a gate is not in place, boats shall round the existing leeward mark to port.

- 8.4 Offset mark: The offset mark will be the same color as Mark 1. In the event of a change of course an offset Mark will not be set.
- 8.5 A green flag flown no later than five minutes before the start means “Mark 1 for the class about to start will be green. This applies to each rounding of Mark 1 by this class.” This changes RRS 27.1 and race signals.
- 8.6 Courses for Doublehanded Class and the Pursuit Race are described in SI Addenda 2 and 3, respectively.

9 THE START

- 9.1 A boat shall check in before her first start of each day and shall advise the race committee of the number of souls on board. Check in by radio is not allowed.
- 9.2 The starting line will be between a staff displaying an orange flag on the race committee signal vessel and the course side of the port-end starting mark.
- 9.3 The failure to hail, the order of hail, the hail of some but not all, the failure of a boat to hear such hail or the untimely hail of OCS boats will not be grounds for redress. This changes RRS 62.1(a).

10 CHANGE OF THE NEXT LEG OF THE COURSE WHILE RACING

To change the next leg of the course, when Mark 1 is yellow, orange, or red, the race committee will set a pink change mark (or move the finishing line) and remove the original mark as soon as practicable. When in a subsequent change a new mark is replaced, it will be replaced by an original mark. When Mark 1 is green pursuant to SI 8.5, a change mark will be identified by a black band, and a subsequent change will be un-banded.

11 THE FINISH

- 11.1 The finishing line will be between a staff on a race committee boat from which a blue flag is displayed and the nearby Finishing mark.
- 11.2 Competitors retiring from racing shall report to the Race Committee before leaving the racing area or as soon as practicable once on shore.

12 PENALTY SYSTEM

- 12.1 RRS 44.1 is changed so that appendix V applies for One Design classes only.
- 12.2 Appendix T will apply for all classes.
- 12.3 RRS 44.3 will apply for **PHRF** classes only.
- 12.4 The Protest Desk and the Official Notice Board will be located in the PC Donald R. Humphreys Yardarm Building at the Boston Yacht Club. Protest will be heard at the same location.

13 TIME LIMITS

Any boat that has not finished within 30 minutes after the first boat in its class to finish will be scored DNF, except for the Double-Handed class, which shall have no time limit on Friday. This changes rules 35.

14. PROTESTS AND REQUESTS FOR REDRESS

- 14.1 Protest forms are available at the protest desk at the Boston Yacht Club. Protests and requests for redress or reopening shall be delivered there within the appropriate time limit.
- 14.2 The protest time limit is one hour after the docking of the race committee signal boat for the applicable line.
- 14.3 Protests will be heard at the Boston Yacht Club.
- 14.4 The times of protest hearings and the parties involved will be posted on the official notice board by 15 minutes after the protest time limit.
- 14.5 On the last scheduled day of racing a request for reopening a hearing shall be delivered (a) within the protest time limit if the requesting party was informed of the decision on the previous day; or (b) no later than 30 minutes after the requesting party was informed of the decision on that day. This changes RRS 66.
- 14.6 On the last scheduled day of racing a request for redress based on a protest committee decision shall be delivered no later than 30 minutes after the decision was posted. This changes RRS 62.2.
- 14.7 When the race committee receives a scoring inquiry form, it will review its records and respond as soon as practicable.

15. SCORING

- 15.1 Boats racing PHRF will use Time on Distance Scoring.
- 15.2 The scoring system is as follows: Low Point System, RRS Appendix A, except that boats failing to finish within the time limit will be scored Time Limit Expired (“TLE”) and scored points equal to the number of finishers in that race plus two, but in no case scored more than the number of starters. This changes RRS Appendix A2.1.
- 15.3 No boat’s score will be excluded, unless required under its class rules. This changes RRS Appendix A2.1.
- 15.4 One race is required to be completed to constitute a series.

16. ADVERTISING

- 16.1 Boats shall display advertising chosen and supplied by the organizing authority.
- 16.2 A boat and her crew shall comply with World Sailing Regulation 20, Advertising Code.

17. RADIO COMMUNICATION

- Except in an emergency, a boat shall neither make radio transmissions while racing nor receive radio communications not available to all boats. This restriction also applies to mobile telephones and other electronic devices.
- 17.1 All boats must carry a working VHF radio.
 - 17.2 Emergency conditions shall be reported directly to the race committee on the assigned frequency for its line. Boats in need of assistance can also contact the Marblehead Harbor Master on VHF 16. The Boston Yacht Club Dockmaster will monitor VHF Channel (68). The Eastern and Corinthian Yacht Club Dockmasters will monitor VHF Channel (09).
 - 17.3 Division Channels are as follows:

Line 1 VHF 71-Boston Yacht Club
Line 2 VHF 72-Eastern Yacht Club
Line 3 VHF 78-Corinthian Yacht Club

18 PRIZES

Daily Prizes will be awarded after racing each day. Overall class prizes will be awarded on Sunday, August 27, 2017.

19 MEDIA AND TELEVISION

Competitors give absolute right and permission for any photograph and video footage taken of themselves or the yacht they are sailing during the event, to be published in any media whatsoever, for either editorial or advertising purposes, or to be used in press information.

20 COMPETITORS' CONDUCT

The skipper shall be responsible for the conduct of the crew before, during and after racing. In case of conduct that the Race Committee considers to be a gross breach of good manners or sportsmanship, destruction of property or failure to comply with a reasonable request by the Race Committee, the boat whose crew was at fault may be disqualified and/or subject to protest by the Protest Committee under RRS 69. It is the Protest Committee's intention to invoke this Instruction and RRS 69 in appropriate cases.

21 DISCLAIMER OF LIABILITY

Competitors participate in the regatta entirely at their own risk. See rule 4, Decision to Race. The organizing authority will not accept any liability for material damage or personal injury or death sustained in conjunction with or prior to, during, or after the regatta.

22 INSURANCE

Each participating boat shall be insured with valid third-party liability insurance with a minimum cover of \$300,000.00 per event or the equivalent.

ILLUSTRATION A: LINE AREA MAP

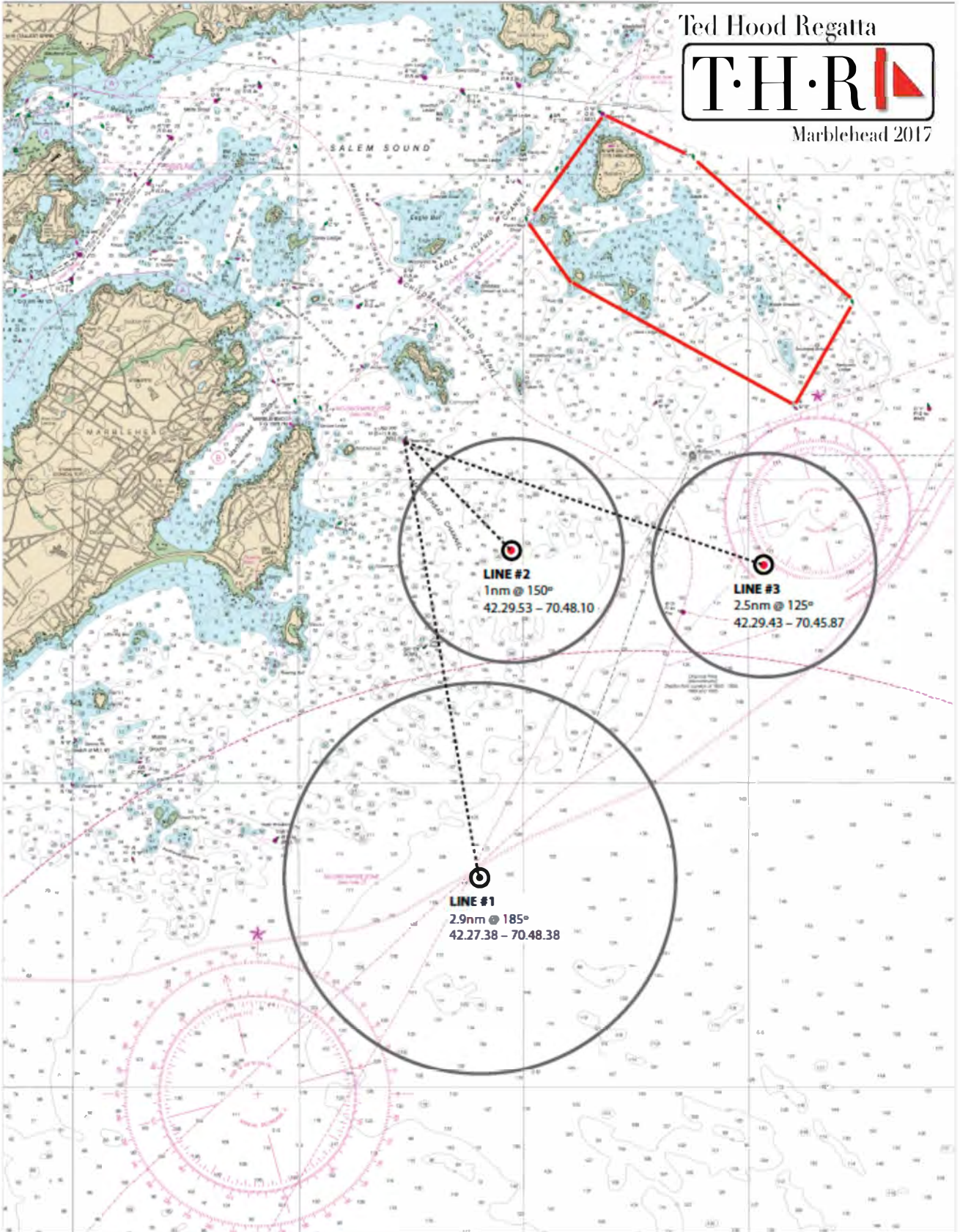
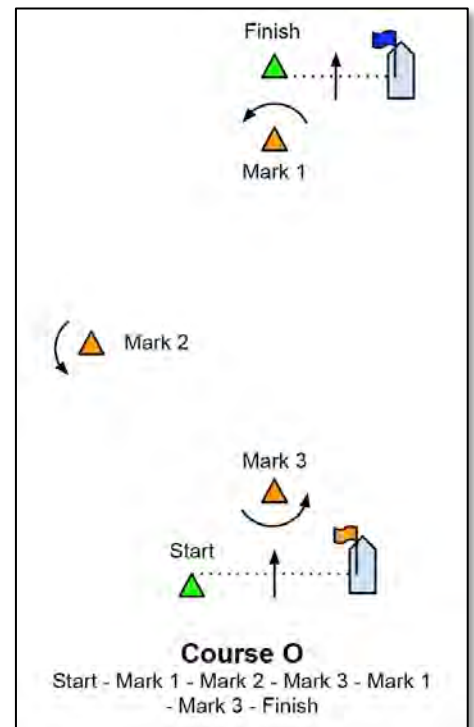
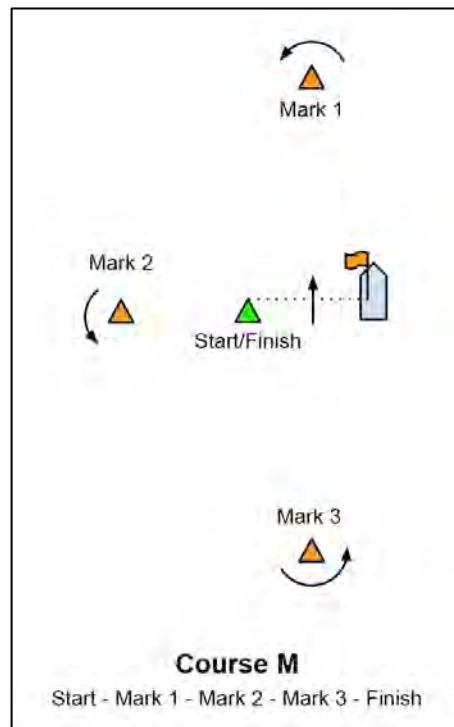
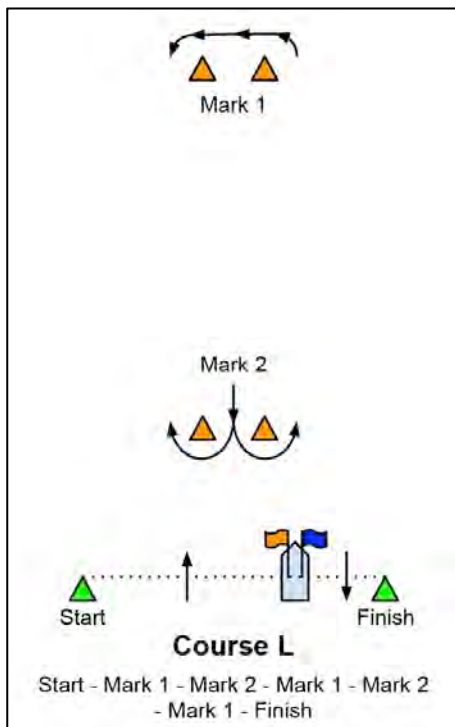
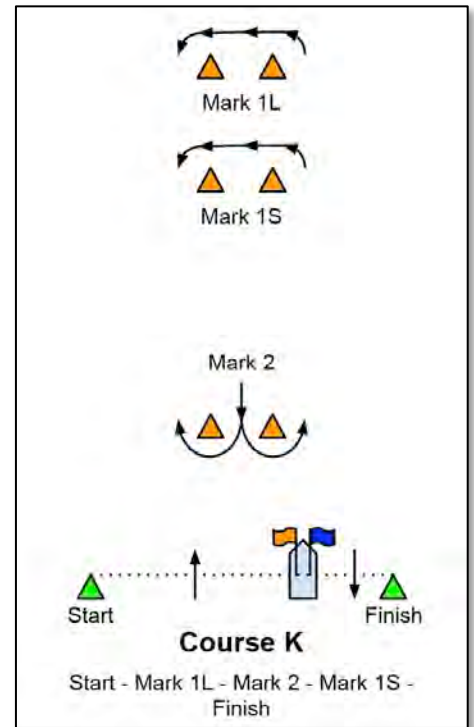
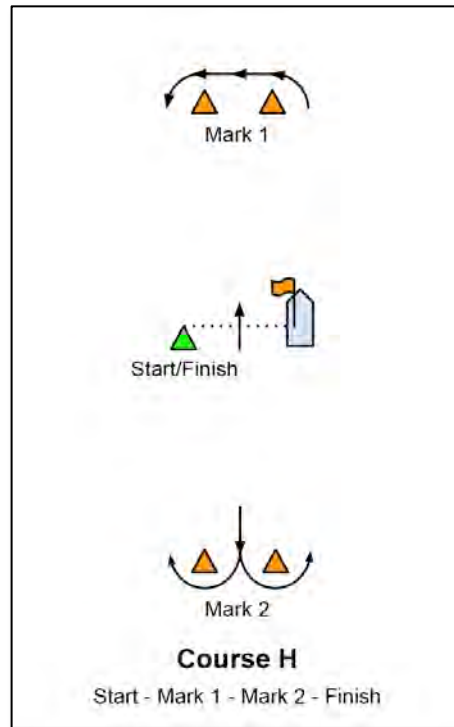
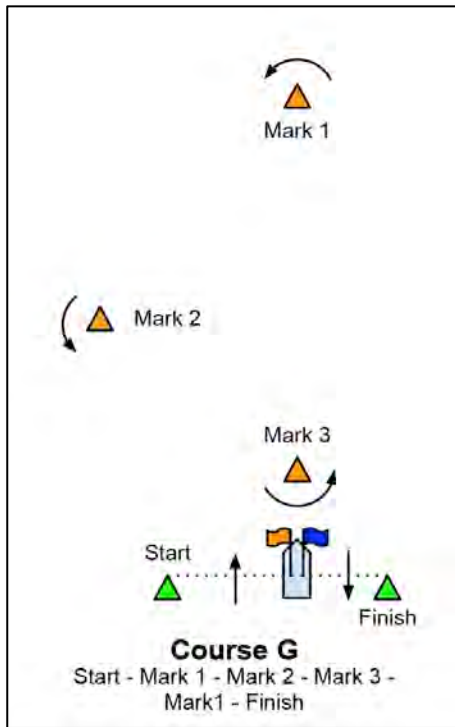


ILLUSTRATION B, CONT.



STORM TRYSAIL CLUB

Ted Hood Regatta



Marblehead 2017

HOST: THE BOSTON YACHT CLUB

August 25-27

ADDENDUM 2
SAILING INSTRUCTIONS - Doublehanded Class

Organizing Authority (OA): Storm Trysail Club

Host Club: Boston Yacht Club (official host) along with the Corinthian Yacht Club and the Eastern Yacht Club

1 Rules

1.1 The regatta will be governed by the rules as defined in The Racing Rules of Sailing.

1.2 Additionally the regatta will be governed by the following:

(a) The PHRF New England (PHRF-NE) Policy, Procedures and Bylaws for boats racing under PHRF.

(b) The US Safety Equipment Requirements (USSER).

i. All yachts shall minimally comply with the US Coastal section of the USSER. Skippers may be required to certify compliance with safety requirements. Boats may be inspected at any time for compliance with the Sailing Instructions.

(c) Except when starting, rounding or passing marks, or finishing, when a race is scheduled to continue after sunset, the *International Regulations for Preventing Collisions at Sea* (“IRPCS”) will replace the *Rules of Part II* of the RRS from sunset until sunrise.

1.3 Wind vanes and/or autopilots may be used without penalty. This changes rule 52.

1.4 The running of the engine is permitted in neutral for the purposes of charging batteries only. This should be logged and provided to the OA upon request. The use of the engine shall never materially improve the boat’s position.

2 Eligibility

Crew is limited to 2 persons each of which shall be at least 18 years of age. A parent/child team may be permitted with prior permission from the OA.

3 Notices to Competitors

Notices to competitors will be posted on the official notice board located in the PC Donald R. Humphreys Yardarm at the Boston Yacht Club. As a courtesy, notices may also be posted

at the Eastern Yacht Club Sailing Center and in the hallway outside the Trophy Room at the Corinthian Yacht Club, and also on www.yachtscoring.com.

4 **Changes to Sailing Instructions**

Any change to the sailing instructions will be posted on the official notice board before 0800 on the day it will take effect, except that any change to the schedule of races will be posted by 2000 on the day before it will take effect.

5 **Signals Made Ashore**

5.1 Signals made ashore will be displayed from the flagstaff of the Boston Yacht Club. As a courtesy, signals may also be displayed on the flagstaffs of the Corinthian Yacht Club and the Eastern Yacht Club.

5.2 When flag AP is displayed ashore, '1 minute' is replaced with 'not less than 60 minutes' in the race signal AP. This changes "Race Signals".

5.3 In case of postponement, radio announcements will be made at 1530 on VHF channel 78, and updates of the status of the postponement will be made at 30 minute intervals thereafter. As a courtesy, these announcements may also be emailed to all registered boats as well as being posted on the web site www.yachtscoring.com.

6 **Schedule of Races**

6.1	<u>CLASS</u>	<u>DAYS</u>	<u>CLUB</u>	<u>VHF</u>
	Double Handed	Friday	Distance Race BYC	71

6.2 The first warning signal is scheduled for 1730.

7 **Classes and Class Flags**

7.1 Classes will be designated on the scratch sheets distributed at check-in and shown online at www.yachtscoring.com.

7.2 Class flags flown from the race committee signal boat will be numeral pennants corresponding to the class number as shown on the scratch sheets.

7.3 A boat racing handicap shall display, from her backstay or a stern staff, the colored streamer provided at registration for her class. A boat without a backstay shall fly the streamer from their starboard standing rigging.

8 **Racing Areas**

On Friday the racing area will be at MARBLEHEAD CHANNEL BELL (15-FT RK) RG "FR" Fl (2+1) R 6s

9 **The Courses**

Attachment A describes the courses that will be used for the Friday evening distance race.

10 **Marks**

The marks are described in Attachment A: Courses.

11 **The Start**

The starting line will be between the signal boat and MARBLEHEAD CHANNEL BELL (15-FT RK) RG "FR" Fl (2+1) R 6s.

12 **Recalls**

The race committee will attempt to hail each boat on course side using VHF radio. The failure to hail, the order of hail, the hail of some but not all, the failure of a boat to hear such a hail or the untimely hail of OCS boats will not be grounds for redress. This changes rule 62.1(a).

13 **The Finish**

13.1 You shall take your own finish time when you pass between MARBLEHEAD CHANNEL BELL (15-FT RK) RG "FR" Fl (2+1) R 6s and the Marblehead Lighthouse. You shall submit the finish time in writing to the Protest Secretary at the Boston Yacht Club Yardarm by 1800 on Saturday August 26.

14 **Time Limits**

There will be no time limit.

15 **Penalty System**

15.1 Both Appendix T1 and the Scoring Penalty, rule 44.3, will apply, offering a boat a choice of on-the-water penalties.

This changes rule 44.1 by deleting the third sentence.

15.2 Appendix T2 will apply.

16 **Protests and Requests for Redress**

16.1 Protest forms are available at the host clubs and shall be delivered to the protest desk within one hour after the last boat finishes the race at the PC Donald R. Humphreys Yardarm building at the Boston Yacht Club.

16.2 Notices will be posted no later than 30 minutes after the protest time limit to inform competitors of hearings in which they are parties or named as witnesses.

16.3 On the last scheduled day of racing a request for reopening a hearing shall be delivered:

- (a) within the protest time limit if the requesting party was informed of the decision on the previous day;
- (b) no later than 30 minutes after the requesting party was informed of the decision on that day. This changes rules 62.2 and 66.

17 **Scoring**

17.1 Boats racing PHRF will use Time on Distance.

17.2 One race is required to be completed to constitute a regatta.

17.3 No race scores will be discarded. This changes rule A2.

18 **Safety Regulations**

18.1 All boats shall have a working VHF radio. The Doublehanded class will use channel 71.

18.2 Safety lines (jack lines) leading forward from both sides of the cockpit to the bow, well secured at each end, shall be rigged throughout the race.

18.3 Before her first start each day, a boat shall check in by sailing on starboard tack past the stern of the race committee signal boat, hailing her sail number along with the number of souls on board and receiving acknowledgement. A boat that fails to check in shall receive a 20 percent scoring penalty for the first race of that day. This changes rules 63.1

and A5.

18.4 In the event of an emergency, or if a boat withdraws, the boat shall notify the race committee at the first reasonable opportunity.

19 Event Advertising

Boats will be required to display the bow stickers on both sides of the boat for the duration of the event.

20 Radio Communication

20.1 Except in an emergency, while racing, a boat shall neither make nor receive radio communications not available to all boats. This restriction also applies to all electronic devices.

20.2 Competitors are permitted to utilize radio communications amongst themselves while racing. This changes rule 41.

21 Prizes

Prizes may be given at the discretion of the organizing authority.

22 Disclaimer of Liability

Competitors participate in the regatta entirely at their own risk. See rule 4 Decision to Race. The organizing authority will not accept any liability for material damage or personal injury or death sustained in conjunction with or prior to, during, or after the regatta.

Attachment A: COURSES

COURSE A – 64nm

From the Start to R “6” Fl R 4s BELL (Farnham Rock) leaving it to Port. Thence to R “2” Fl R 4s WHIS (off Gloucester), leaving it to Port. Thence to G “1” Fl G 4s WHIS (Newcomb Ledge) leaving it to Starboard. Thence to the finish.

Reverse A – 64nm

From the Start to G “1” Fl G 4s WHIS (Newcomb Ledge) leaving it to Port. Thence to R “2” Fl R 4s WHIS (off Gloucester), leaving it to Starboard. Thence to R “6” Fl R 4s BELL (Farnham Rock) leaving it to Starboard. Thence to the finish.

COURSE B – 90nm

From the Start to R “6” Fl R 4s BELL (Farnham Rock) leaving it to Port. Thence to G “1” Fl G 4s BELL (off Wood End), leaving it to Port. Thence to R “2” Fl R 4s BELL (Three and One-Half Fathoms Ledge) leaving it to Starboard. Thence to the finish.

Reverse B – 90nm

From the Start to R “2” Fl R 4s BELL (Three and One-Half Fathoms Ledge) leaving it to Port. Thence to G “1” Fl G 4s BELL (off Wood End), leaving it to Starboard. Thence to R “6” Fl R 4s BELL (Farnham Rock) leaving it to Starboard. Thence to the finish.

COURSE C – 127nm

From the Start to G “1” Fl G 4s BELL (off Wood End), leaving it to Port. Thence to Fl(5) Y 20s Priv (Jeffreys Ledge N 42 48.112 W 070 10.126) leaving it to Port. Thence to G “1” Fl G 4s WHIS (Newcomb Ledge) leaving it to Starboard. Thence to the finish.

Reverse C – 127nm

From the Start to G “1” Fl G 4s WHIS (Newcomb Ledge) leaving it to Port. Thence to Fl(5) Y 20s Priv (Jeffreys Ledge N 42 48.112 W 070 10.126) leaving it to Starboard. Thence to G “1” Fl G 4s BELL (off Wood End), leaving it to Starboard. Thence to the finish.

STORM TRYSAIL CLUB

Ted Hood Regatta



Marblehead 2017

HOST: THE BOSTON YACHT CLUB

August 27

ADDENDUM 3-PURSUIT RACE SAILING INSTRUCTIONS

1. **Event:** The Ted Hood Regatta Pursuit Race will be a pursuit type race in which the slower boats start before the faster boats with each boat starting at an assigned time, depending on their PHRF handicap. The Organizing Authority is the Storm Trysail Club.

The Division is open to Non Spinnaker boats with five (5) or more entries competing.

2. **Eligibility:** Open to PHRF boats with valid PHRFNE handicap certificates. If you don't have a valid PHRF-NE certificate, we'll assign you a rating. Indicate if racing in the spinnaker or non spinnaker division and provide information on boat design and type, largest headsail (in percentage of "J"), if an inboard, type of propeller (fixed, folding or feathering) and, if in the Spinnaker Division, the largest spinnaker (in percent of "J"). Provide as much of this information as you can so we can give you an accurate rating.
- 3 **Rules:**
 - 3.1 This Event will be governed by the Racing Rules of Sailing and Mass Bay Sailing Association (MBSA) General Sailing Instructions except as altered by these Sailing Instructions. Children under 12 years of age must wear PFD's at all times.
 - 3.2 PHRF Time on Distance will be used.
- 4 **Notices to Competitors:** Will be posted on (i) the official notice board located at the yardarm of the BYC (ii) On www.yachtscoring.com (iii) by email to addresses supplied at registration.
5. **Signals Made Ashore:** Will be displayed from the BYC flagstaff.
6. **Schedule of Races:** There will be one race.
7. **Start Times:** Shall be assigned with registration. The numerical code flag with a red/green flag indicating the course will be raised with one sound signal 5 minutes before the start time of the first boat. If code flag "T" is also displayed, the course is to be sailed twice around. The RC will attempt to do a countdown for each boat's start to be broadcast on VHF channel 72.
- 8 **Check In Before the Start:** Boats shall check in at the RC signal boat. Boats withdrawing from the race shall notify the Race Committee as soon as possible.
9. **Warning Signal:** The first warning signal will be no earlier than 1155 hrs.
10. **The Start:** Will be near the mouth of Marblehead Harbor. The starting line will be between an orange flag on the RC Signal Boat and a green tetrahedron mark.
11. **The Course:** Course details and Mark information are provided in the Addendum to these Sailing Instructions found on the event page at www.yachtscoring.com. When **code fag "T"** is also displayed the course is to be sailed twice around.
- 12 **The Finish:** Will be in the same area as the Starting Line and be between the RC signal boat and a green tetrahedron mark
13. **Recalls and Communication:** The Race Committee will use VHF channel 72.
14. **Time Limit:** The time limit for the first to finish is 1500 hours. The Race Committee may shorten course for any reason (changes RRS 32), and finish boats in place.
15. **Scoring:** Boats will be scored in their order of finish.
16. **Prizes:** Trophies will be presented for the first through third place. Presentations will be made at the BYC during the after race party.

Social Activities: Prizes will be awarded at the Event tent at the BYC after the race.

DESCRIPTION of COURSE 2, 5, & 7

COURSE #2

The starting line shall be as describe in these Event Sailing Instructions. Mark 1 of the course shall be an orange tetrahedron located 1.0 nautical miles from the start. It shall be left to port at the rounding. The finish shall be at the location of 'the start', resulting in a total course length of 2.0 nautical miles.

The magnetic bearing to Mark 1 will be posted on the Signal Boat.

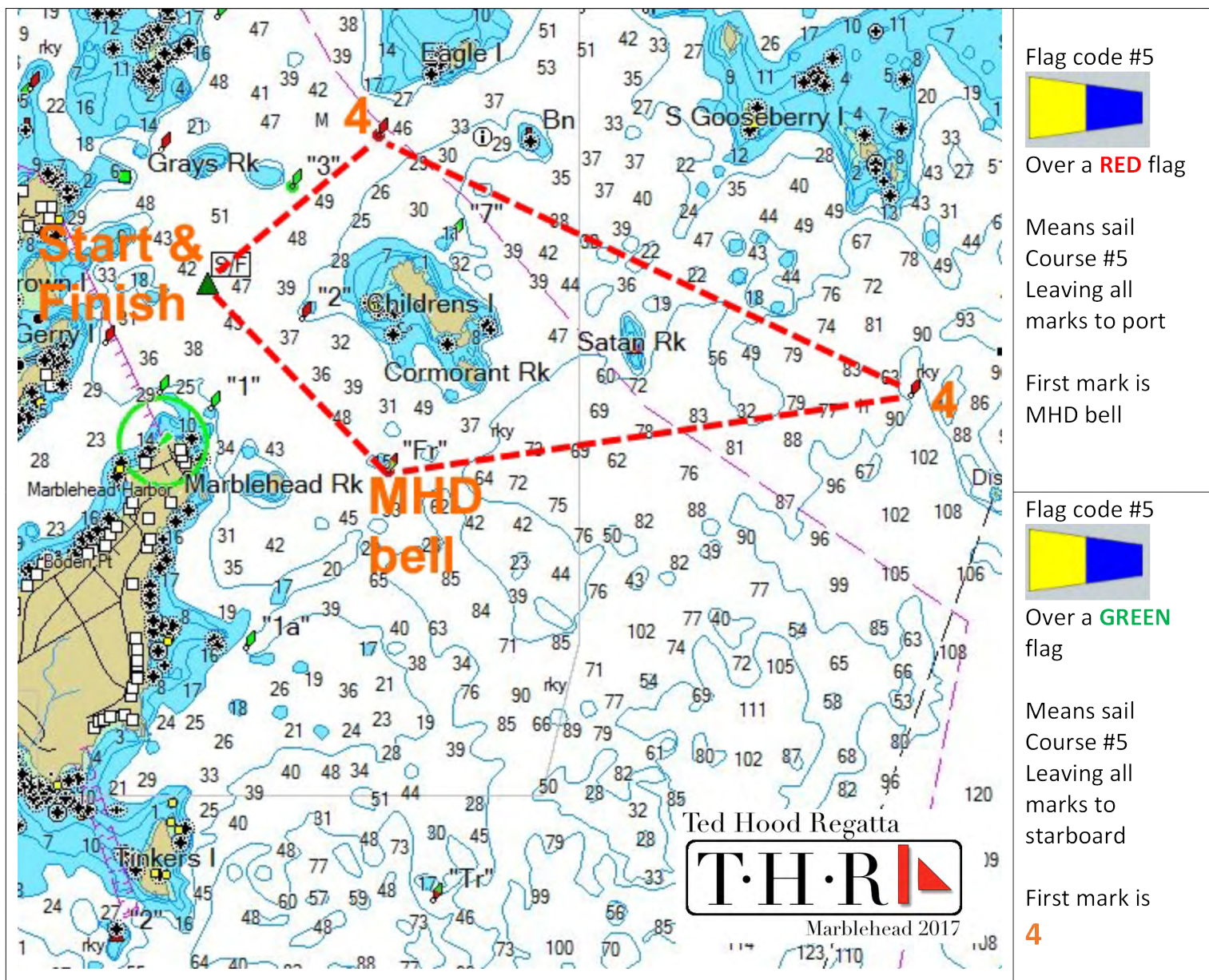


This course will be signaled by use of a numerical code #2 flag

COURSE #5

Course #5 is approximately 5 nautical miles long and will be sailed leaving all marks to either port or starboard.

Flags will indicate which direction as shown below the course chart. Start & finish will be between the Signal boat's orange (start) or blue (finish) flag & a green tetrahedron.



Flag code #5



Over a **RED** flag

Means sail
Course #5
Leaving all
marks to port

First mark is
MHD bell

Flag code #5



Over a **GREEN**
flag

Means sail
Course #5
Leaving all
marks to
starboard

First mark is
4



Marblehead 2017

COURSE #7

Course #7 is approximately 7 nautical miles long and will be sailed leaving all marks to either port or starboard.

Flags will indicate which direction as shown below the course chart. Start & finish will be between the Signal boat's orange (start) or blue (finish) flag & a green tetrahedron.

